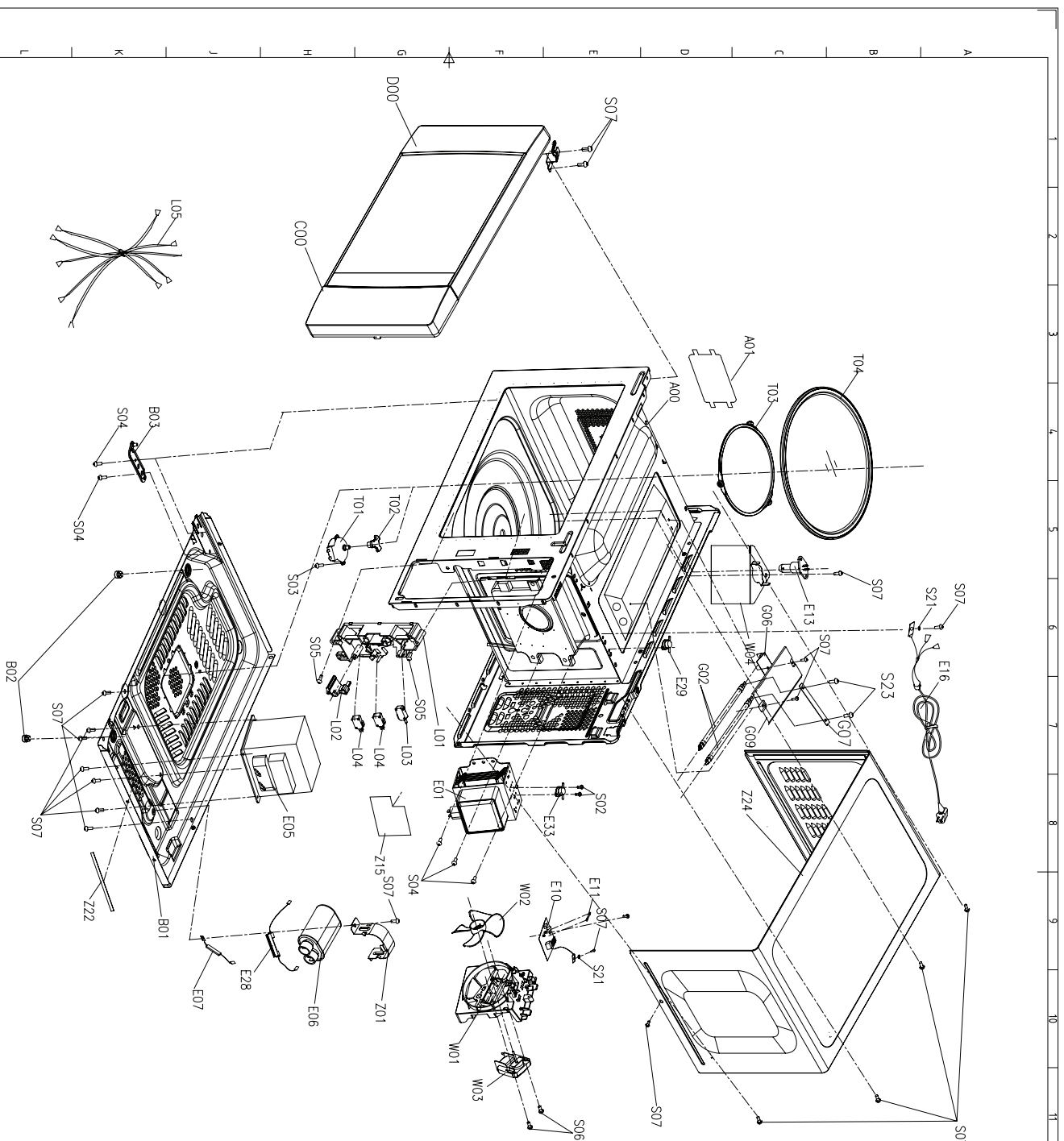


| No. | 图号 (Drawing No.) | 零件名称 (Part Name) | Qty. | 材料标注 (Material) | 备注 (Remark) |
|-----|------------------|------------------|------|-----------------|-------------|
| S02 | SCREW 3*8P-BHC | 螺钉 | 3 | Q235A | |
| E20 | WB14-09 | 定时器 | 1 | ASS'BL Y | |
| C15 | AG92A2A103-14 | 装饰圈 | 2 | ABS | |
| C13 | WB42-10 | 面板 | 1 | PBT | |
| C12 | WB63-79 | 定时器按钮 | 2 | ABS | |
| C08 | WB13-12 | 按钮弹簧 | 2 | 65Mn | |
| C07 | MM720C2A103-06 | 开门按钮 | 1 | ABS | |
| C01 | MM720C2A10301-01 | 控制面板 | 1 | ABS+PC | |

| No. | 图号 (Drawing No.) | 零件名称 (Part Name) | Qty. | 材料标注 (Material) | 备注 (Remark) |
|-----|------------------|------------------|------|-----------------|-------------|
| D08 | MM77CKE02-02 | 门铰 | 1 | PP | |
| D07 | MM720C2A10202-01 | 门框 | 1 | ABS | |
| D06 | MM720C2A10202-01 | 门框 | 1 | ABS | |
| D05 | MM77CKE02-03 | 门框 | 1 | PP | |
| D04 | WB43-10 | 上铰链 | 1 | SGC | |
| D03 | WB2-15 | 门铰弹簧 | 1 | 65Mn | |
| D02 | WB11-10 | 门铰 | 1 | PMU | |
| D01 | MM77CKE0201-01 | 门框组件 | 1 | SPC | |



| | | | | |
|-----|-------------------------|------|----------|--------|
| Z15 | Cover Cavity Lamp | 1 | | |
| G07 | CONNECTOR QUARTZ HEATER | 1 | | |
| S23 | SCREW #4*6 | 2 | | |
| Z24 | Case Out | 1 | | |
| Z22 | Sponge | 1 | | |
| Z01 | Holder H.V.C | 1 | | |
| W04 | Guide Wind | 1 | | |
| W03 | Motor Fan | 1 | | |
| W02 | Fan | 1 | | |
| W01 | Guide Fan | 1 | | |
| T04 | Troy | 1 | | |
| T03 | Ring Rotating ASS'Y | 1 | | |
| T02 | Coupler | 1 | | |
| T01 | Motor Troy | 1 | | |
| S21 | Spring Washer #4.1 | 2 | | |
| S17 | Screw 0.3*10 | 2 | | |
| S07 | SCREW C14*8TBHC | 30 | | |
| S06 | Screw 0.4*20 | 2 | | |
| S05 | Screw 0.4*12 | 3 | | |
| S03 | Screw #4*8 | 1 | | |
| S02 | SCREW S13*8PBHC | 3 | | |
| L02 | Lever Switch | 1 | | |
| L05 | Horness Main | 1 | | |
| L04 | Microswitch Monitor | 2 | | |
| L03 | Microswitch Interlock | 1 | | |
| L01 | Board Latch | 1 | | |
| G09 | Insulator Heat *1 | 1 | | |
| G06 | BRKT Light Heater | 1 | | |
| G02 | Heater Quartz | 2 | | |
| E29 | Thermostat 70/59 H# | 1 | | |
| E33 | Thermostat 160/95 H# | 1 | | |
| E28 | ASSY H.V.Fuse | 1 | | |
| E16 | Power Cord ASSY | 1 | | |
| E13 | Lamp | 1 | | |
| E11 | Fuse | 1 | | |
| E10 | Filter Noise | 1 | | |
| E07 | H.V/Diode | 1 | | |
| E06 | H.V/Capacitor | 1 | | |
| E05 | H.V/Transformer | 1 | | |
| E01 | Magnetron | 1 | | |
| B03 | BRKT Hinge*U | 1 | | |
| B02 | Leg | 2 | | |
| B01 | Base Plate | 1 | | |
| D00 | ASSY DOOR | 1 | | |
| C00 | ASSY C/PANEL | 1 | | |
| A13 | BRKT THERMOSTAT | 1 | | |
| A01 | Cover Wave Guide | 1 | | |
| A00 | Cavity Assembly | 1 | | |
| No. | Part Name | Qty. | Material | Remark |